



IDEALHOMES *International*

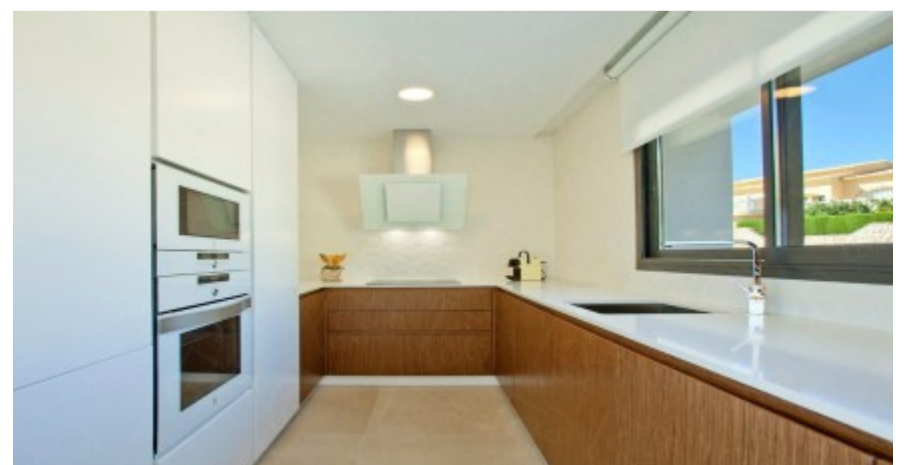
in Benitachell, Alicante

ALBOR MODEL IN LIRIOS SUNRISE || Detached villa with 853 m³ Private Plot and built area of 355m², consists of 3 bedrooms with 3 bathrooms en suite, living room - dining room (dump body) to create the feeling of being suspended on the sea. Thanks to the modular design centered with the outdoor areas, it facilitates the access of all the units to the bathing area and gardens.

URBANISATION of single-family homes with own style and modern design with a unique location and fantastic views of the Sea and the Island of Ibiza.

SERVICES in commercial area with supermarket, hairdresser, pharmacy, bars and restaurants, Lady Elizabeth International College, tennis courts, paddle tennis, hiking trails, equestrian center and beaches. Just 900 meters from Benitachell population where you will find the rest of necessary services such as Medical Center, City Hall, Banks, Restaurants.

You can enjoy the sea in Cala del Llebeig and just 4 km from Moraira. Distance to the Sea 3 km, Golf 5 and the Airport 98 km.



Area: 379 m²

Bedroom(s): 3

Bathroom(s): 2

Pool: No

Garden: Yes

985.000 EUR

Ref: N3768