



IDEALHOMES *International*

Commercial Space with 225m2 on Avenidas Novas com Logradouro

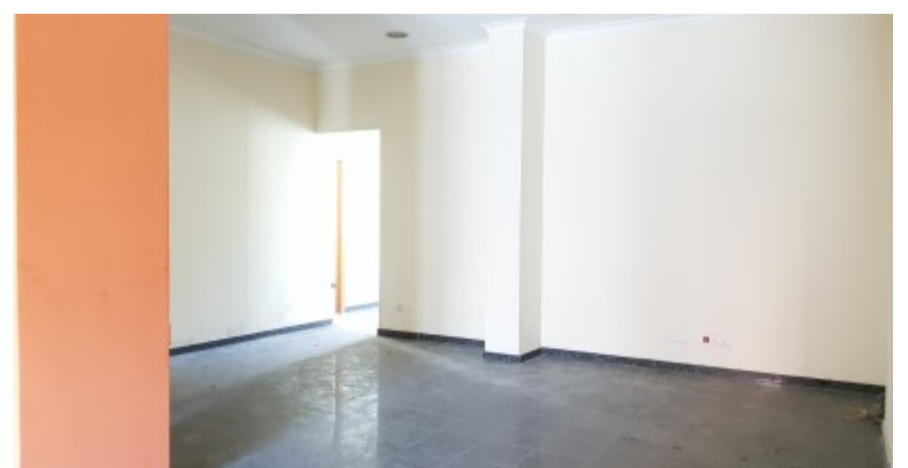
in Rego (nossa senhora de fátima), Lisboa

Investment opportunity in commercial space. Located on Avenidas Novas, Bairro do Rego, next to Av. of the Fighters near the Plaza de España.

Area with excellent access, optimally served by trade, services and public transport. The property consists of two autonomous fractions, one with 122m2 and the other with 103m2, which are distributed over several rooms, toilet and Logradouro. Excellent for investor or who seeks to install a business in the center of Lisbon.

Come and meet me!

Refª NG101902



Area: 205 m2

Bedroom(s): -

Bathroom(s): 1

Pool: No

Garden: No

433.000 €

Ref: HT-NG101902